



Woodworking Industry

diverse and sustainable





WEIMA shreds
and briquettes

Plastic

e.g. pipes, profiles, start-up lumps, fibers, films,
insulating materials, boxes, containers

Plastic shredders offer different rotor types, cutting geometries and tools and can shred and briquette various thermoplastics such as PE, PP, PVC, PS, PU and PET, as well as various duroplastics and elastomers.





Plastics industry

versatile and flexible





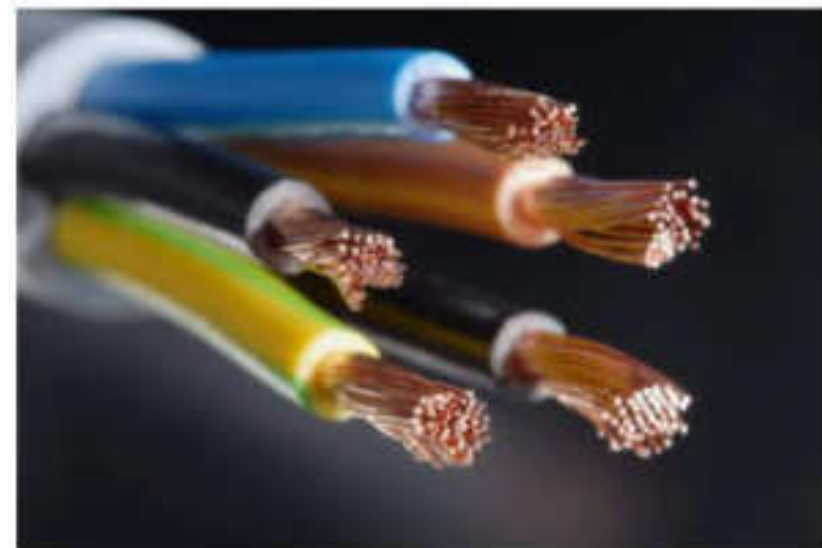
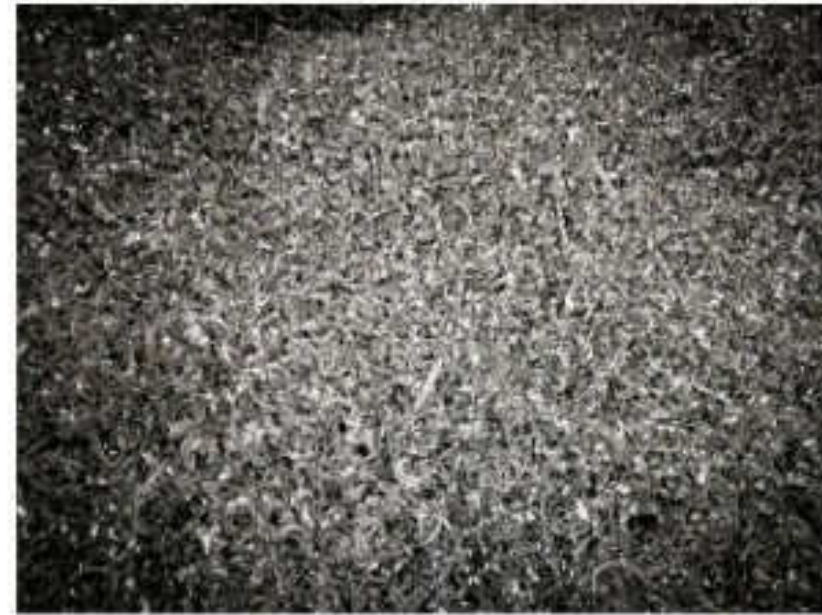
WEIMA shreds
and briquettes

Metal

e.g. sawing and milling waste from steel, aluminum,
copper, brass and profiles, cans, foils, stamping waste

Metal briquettes offer numerous advantages: optimized storage, more efficient transport by volume reduction as well as cost-effective further processing. In addition, expensive cooling lubricants, residual oils and emulsions can be recovered, which are then returned to the cooling or lubrication circuit.





Metal industry

diverse and valuable





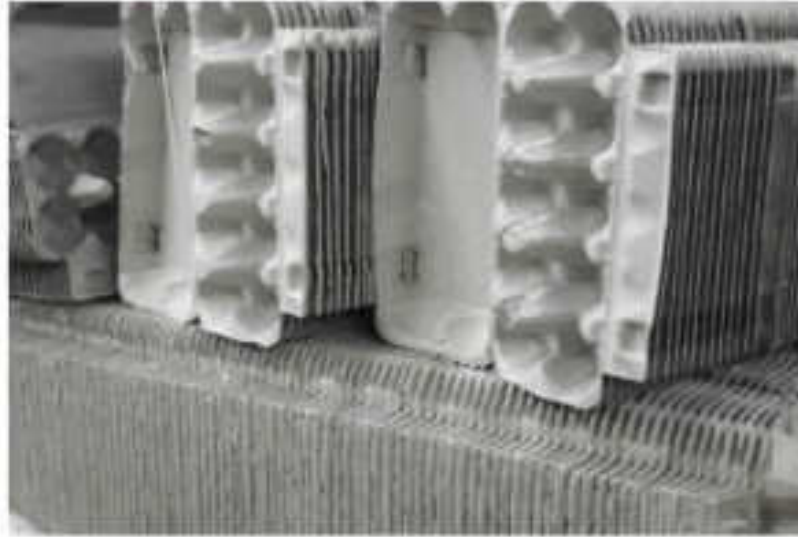
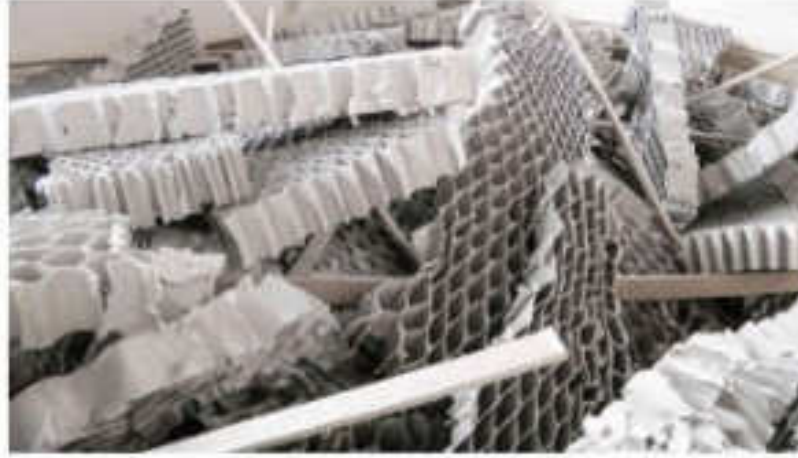
WEIMA shreds
and briquettes

Paper

e.g. paper waste, documents, cardboard, filter paper,
files, pulp, paper rolls

Cellulose is the pioneer of recycling. The recycling of paper and cardboard is of the utmost importance both economically and ecologically – because the more paper is recycled, the less newly cut wood is used for paper production.





Paper industry

diverse and sustainable





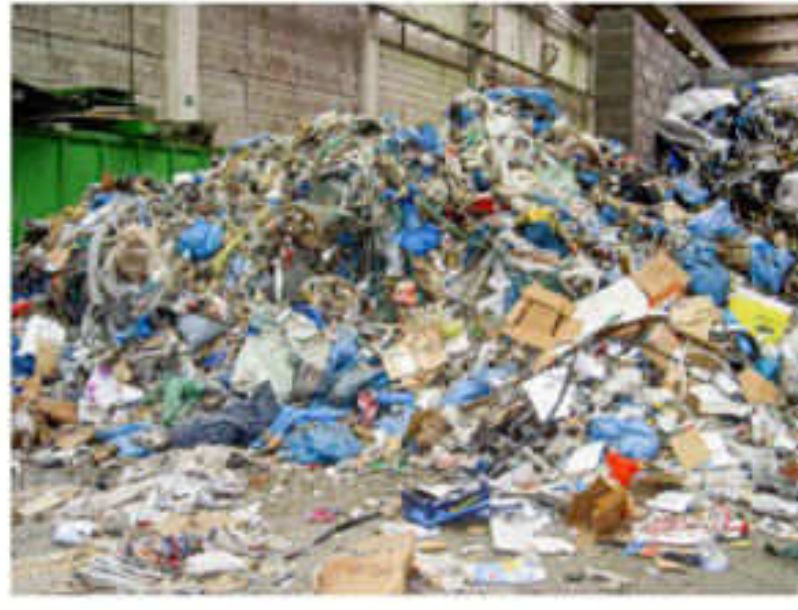
WEIMA shreds
and briquettes

Waste

e.g. industrial and municipal waste, carpet and production residues, bulky and household waste, wood waste

Waste is secondary raw material. And the production of substitute fuels is a particularly economical aspect. Thanks to extremely robust construction and superior drive concepts, WEIMA pre-shredders and secondary shredders are specially designed for these requirements.





Waste industry

energetic and valuable





WEIMA shreds
and briquettes

Biomass

e.g. miscanthus, straw, cones, tobacco, hay,
nut shells, pulses, cotton, flax

The briquette form makes your waste transportable and ready for profitable sales. The calorific value is much higher than with loose mass, the burning properties are ideal. The further use of biomass as a low-cost alternative for feed production for the agricultural industry is also indispensable.





Biomass industry

organic and sustainable





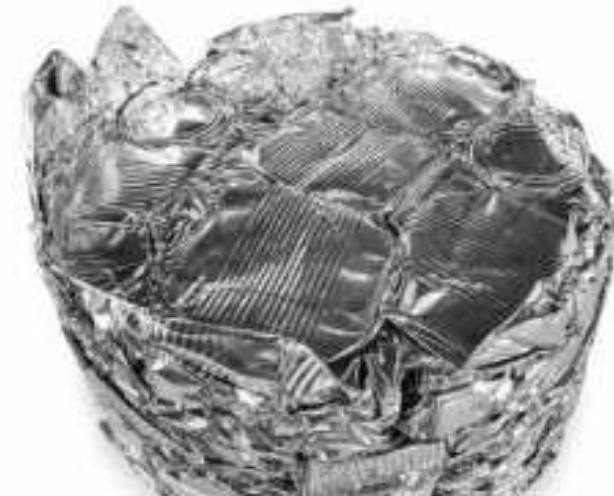
WEIMA compacts

Packaging | empty

e.g. PET bottles, yoghurt cups, canisters, tubular bags
beverage cans, tins, spray cans

Production waste, but also empty packaging, takes up valuable storage space. Compressing PET bottles, yoghurt cups, canisters, tubular bags and metal packaging such as beverage cans, spray cans and tins into compact discs simplifies the handling of residual materials in intralogistics and reduces transport and disposal costs. Disposable packaging material such as coffee cups, one-way cutlery or plates can also be compressed without any problems using packaging presses from WEIMA.





Empty packaging

space-saving and sustainable





WEIMA compacts
and drains

Packaging | filled

e.g. beverage containers, PET bottles, milk cartons, cans,
TetraPaks, plastic bottles

PET bottles, cans, TetraPaks and many other packages can be emptied and compressed quickly, efficiently, cleanly and fully automatically with WEIMA drainage presses. Interfering materials such as swing stoppers are simply compressed as well. The compressed packaging can be easily recycled. The pressed-out liquid can be reused or disposed of properly.





Filled packaging

economical and sustainable





WEIMA compacts
and drains

Labels

e.g. bottle labels, sealing caps, plastic or aluminum
beverage labels, label waste

The draining and compressing of bottle labels, caps and beverage labels not only reduces disposal costs, but also increases container downtimes. In addition, the pressed-out disc can be safely transported away and reintegrated. Bottling companies and plastics recyclers in particular thus find a sustainable solution for the cost-effective disposal of label waste from their own production or residual materials from the post-consumer sector.





Labels

dispose sustainably





WEIMA compacts
and drains

ReWork

e.g. beverage cans, PET bottles, milk cartons, TetraPaks,
plastic containers, packaging

Not only for social and ecological reasons is avoiding food waste a top priority, but also from an economic perspective, alternative reuse within the food chain in the form of ReWork is more than desirable. Production waste that incurs in the form of faulty batches, mispackaged goods or offcuts can be kept in the food cycle for longer with WEIMA drainage presses.



SHREDDING + COMPRESSING



ReWork

sustainable recycling



Reduce.

Reuse.

Recycle.

